

Undergraduate Prospects After Graduation

Jason Sun, Erika Tang, and David Zimmerman

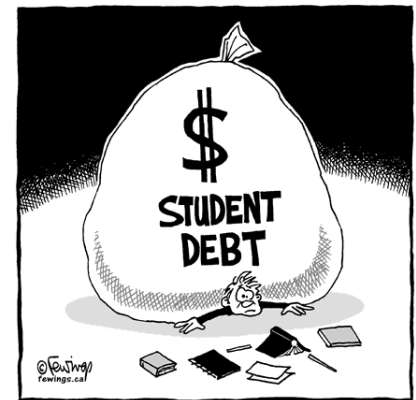
Agenda

- Review of Project
 - Question and Motivation
 - Data Collection and “Questionnaire”
- Issues
- Successes
- Analysis
- To do...

Review: Question and Motivation



- What are the job placement and graduate school opportunities available to Carnegie Mellon Undergraduates?
- Student debt
- Inflated job placement ratings from law schools



Review: Data Collection and “Questionnaire”

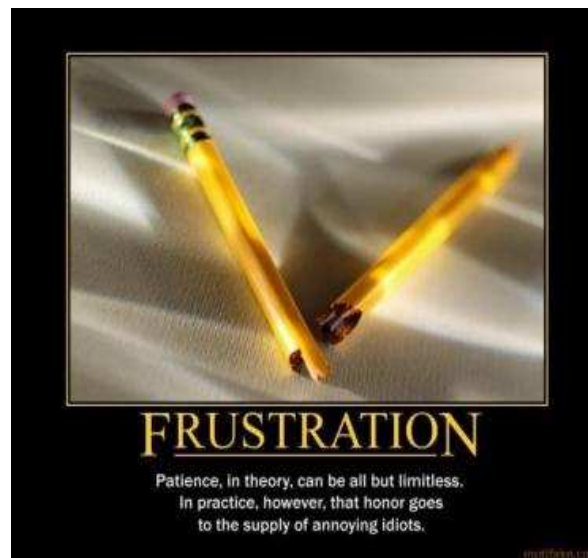
- Post-Graduation Survey Results from Career Center
 - http://www.studentaffairs.cmu.edu/career/students_alumni/post-grad-survey/index.html
 - includes such a large portion of the undergraduate student population, it is almost census data
- No formal questionnaire
 - Check list of information and inferences we want to find

Review: Sample Selection and Method

- According to previous calculations, needed $n=292$
 - Have $n=3331$
- Compiled all Career Center Data into on Excel file
 - Years 2008-2010
- Meta Analysis
 - $n=100, 300, 600, 900$

Issues

- Data lacking uniform
- Some data is aggregate
- Non-response units
 - Bias?
- Graduate School Rankings
 - Fiske, US News
- Actual vs. perceived job correlation
- Indeed.com salaries
- Too much data
- Data coding
- CFA!!!



Successes

- Career Center cooperation
- Data synthesis
- Have response rates
- Beginnings of Analysis



Analysis: Sample Information

Year	Number of Graduates
2008	1295
2009	1349
2010	1407
Total	4051

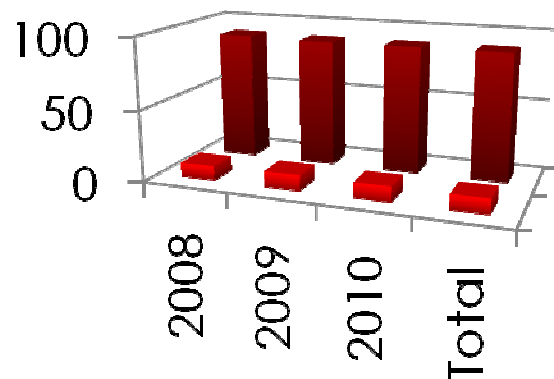
- $n=3311$
 - Response rate of 81.73% (from 3311/4051)



Analysis: Employment

Year	Percent Employed
2008	29.03%
2009	37.43%
2010	35.61%
Total	34.12%

College	Percent Employed
CIT	54.1%
CFA	21.51%
HSS	27.5%
MCS	44.2%
SCS	80.51%
Tepper	63.04%



no correlation

no correlation
yes correlation

Analysis: Employment

Salary Descriptive Statistics

	N	Min	Max	Avg	SD
Indeed	658	1320	194000	71738	26332

Salary Descriptive Statistics

	N	Min	Max	Avg	SD
Indeed	633	0	203000	73132	27293

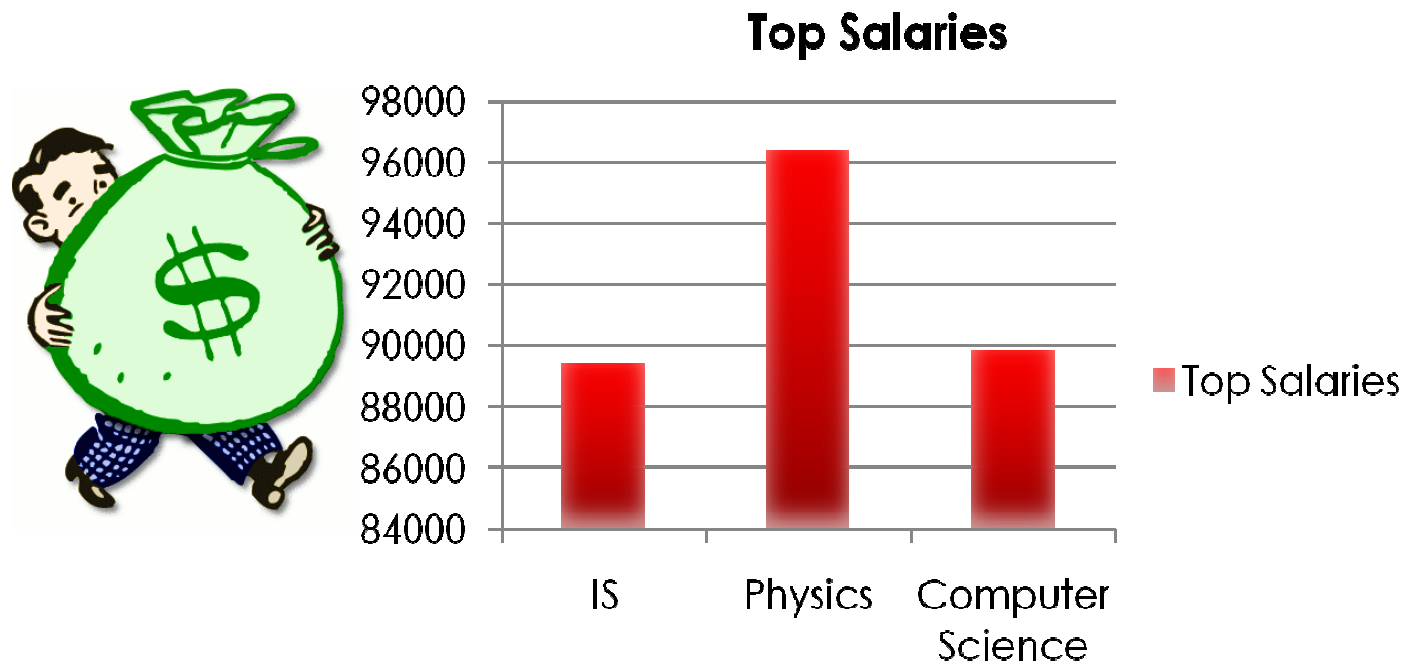
Salary Descriptive Statistics (2009)

	N	Min	Max	Avg	SD
Indeed	647	3000	240000	75519	29282

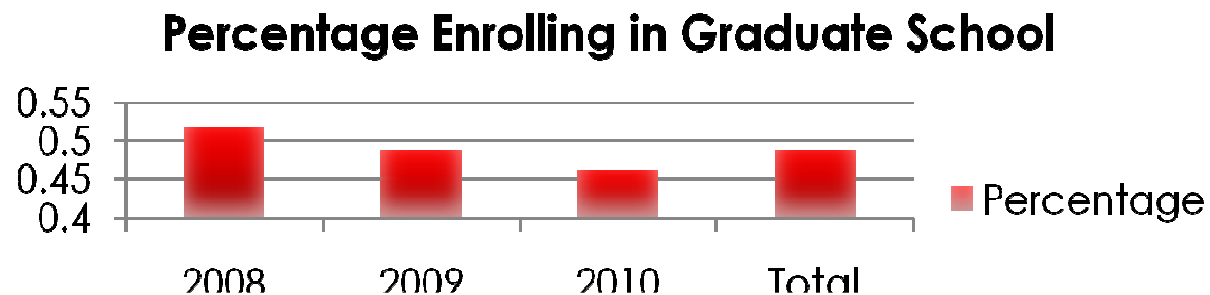
Salary Descriptive Statistics (All)

	N	Min	Max	Avg	SD
Indeed	1938	0	240000	73456	27688

Analysis: Employment

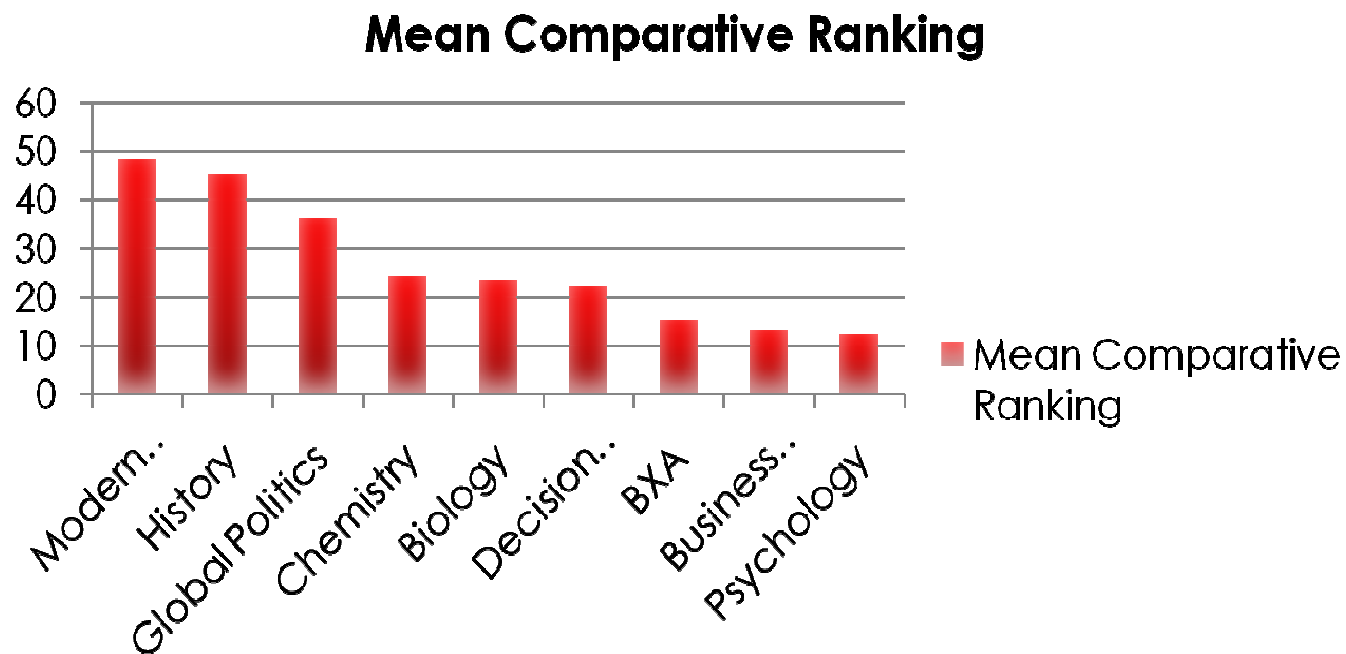


Analysis: Graduate School

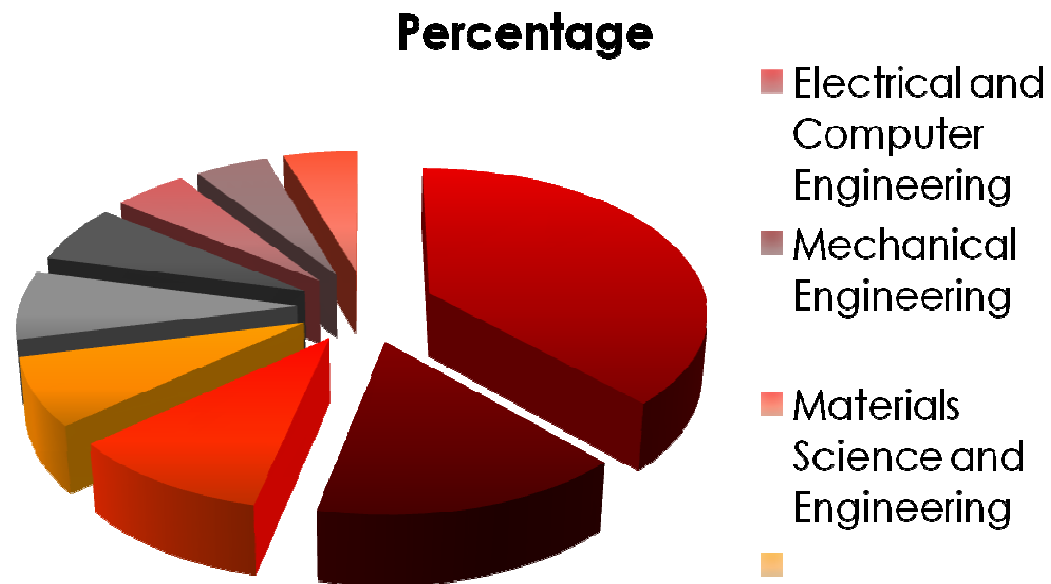


Descriptive Statistics (2008-2010)					
	N	Minimum	Maximum	Mean	Standard Deviation
Comparative ranking	1330	-174	100	4.77	34.402
Valid N	1330				

Analysis: Graduate School



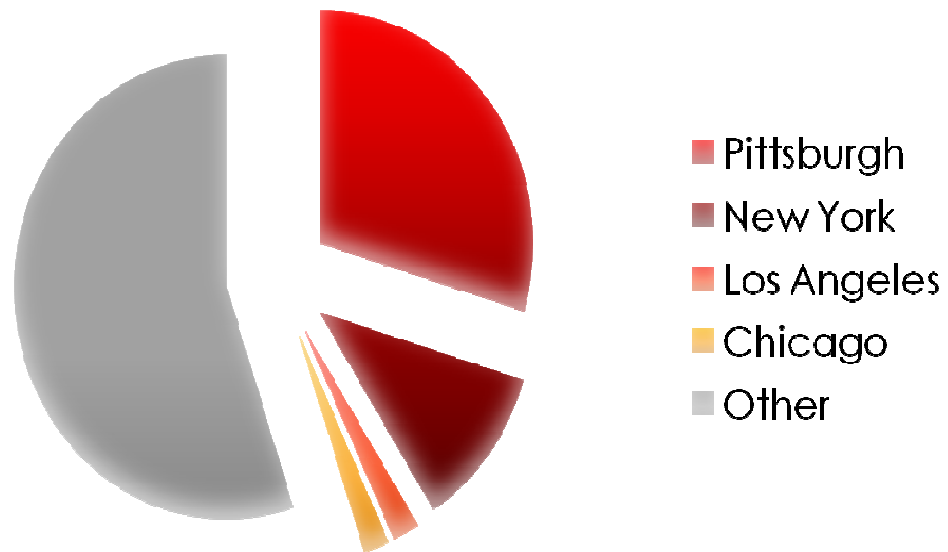
Analysis: Graduate School



*Chart represents top 18.5% degrees sought

Analysis: Distance

Most Popular Destinations



*by percentage of graduates in the given location

To do...

- Finish data analysis
- Test various survey methods
- Write paper
- MoM



Questions