

# 36-303: Sampling, Surveys and Society

Non-response  
Brian Junker  
Department of Statistics  
132E Baker Hall  
brian@stat.cmu.edu

1 March 2011

1

## Handouts

- These Notes
- Mid-Semester Evaluation

1 March 2011

2

## Announcements

- Due Today - 11.5b:
  - Revised questionnaire/protocol based on try-outs!
- Due Thurs Midnight – 11.6:
  - Final, full project proposal (items A-M)
  - IRB form
  - Draft informed consent form/statement
- Also Due Thurs Midnight:
  - Peer evaluations (HW04).
- Spring Break!

1 March 2011

3

## Outline

- Exam Results
  - Solutions are online at the course website
- Non-response and missingness
- Unit Nonresponse
- Item Nonresponse
- Dealing with Nonresponse
- Types of Missingness
- Imputation

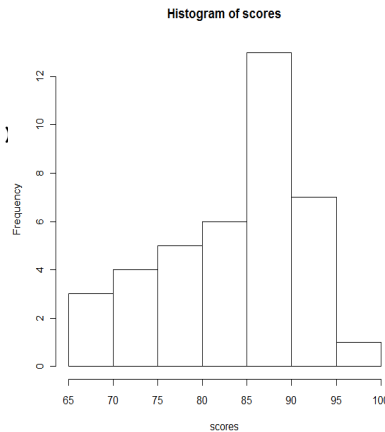
1 March 2011

4

## Exam Results

```
> t(t(table(grade(scores))))
```

```
 [,1]  
A   13  
B   14  
C   11  
D    1
```



```
> summary(scores)
```

Min.	1st Qu.	Median	Mean	3rd Qu.	Max.
69.00	77.00	86.00	84.13	90.00	100.00

## Non-response and Missingness

### ■ Non-response is the what

- Unit non-response: no information at all from that unit (that respondent)
- Item non-response: (no response on one or more items from that unit; you do get info on other items from that unit)

### ■ Missingness is the why

- Ignorable missingness: basically got a smaller sample than you expected, but no bias
- Nonignorable missingness: smaller sample **and bias**

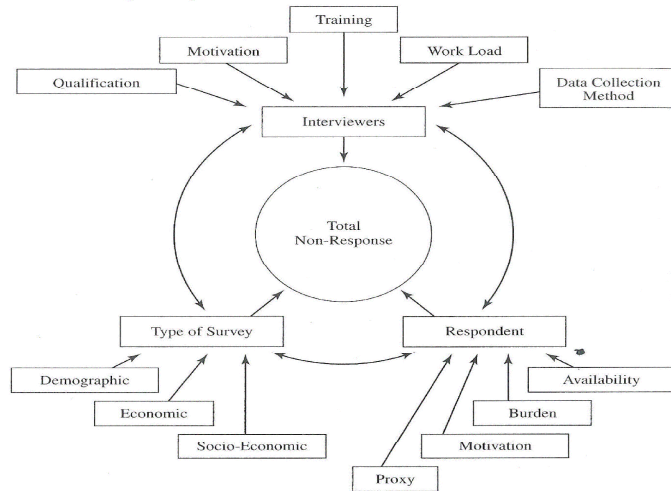
## Unit Non-response

- Why might we get a high percentage of unit non-response?
- What's the problem with unit non-response?

## Some Types of Unit Non-response

- Non-contact
- Refusal
- Unable to participate
  - How can you remedy these?
  - How can you learn about why they happen?
  - How can you learn how they affect your results?

## Factors Affecting Unit Non-response



SOURCE: "Some Factors Affecting Non-Response," by R. Platek, 1977, *Survey Methodology*, 3, 191-214. Copyright © 1977 Survey Methodology. Reprinted with permission.

1 March 2011

9

## Item Non-response

- Why might we get a high percentage of item non-response?
- What's the problem with item nonresponse?

1 March 2011

10

## Some Types of Item Non-response

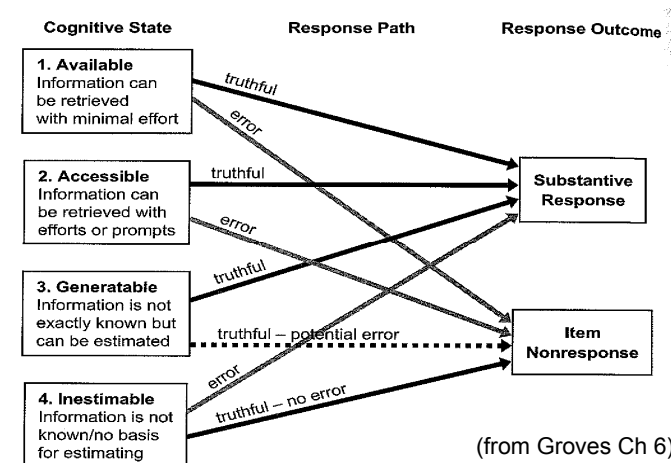
- Refusal
- Blank
- Unintelligible
- Off-topic

- How can you remedy these?
- How can you learn about why they happen?
- How can you learn how they affect your results?

1 March 2011

11

## Factors Affecting Item Non-response



(from Groves Ch 6)

1 March 2011

12

## Best Approach: Prevent Non-response Through Good Design

- Survey Content
- Time of Survey
- Interviewers
- Data Collection Method
- Questionnaire Design
- Burden on Respondent
- Survey Introduction
- Incentives/Disincentives
- Followup

1 March 2011

13

## Dealing with Non-response: Ignore It?

- What assumption does this make about our sample and our population?
- What effect does it have on our estimates?
  - bias?
  - variability?
- What if we just asked more people?

1 March 2011

14

## Bias Due to Non-response

$$N = N_R + N_M = N_{responding} + N_{missing}$$
$$\bar{Y}_{pop} = \frac{N_R}{N} \bar{Y}_R + \frac{N_M}{N} \bar{Y}_M$$

$$(bias) = \bar{Y}_R - \bar{Y}_{pop} = \bar{Y}_R - \frac{N_R}{N} \bar{Y}_R - \frac{N_M}{N} \bar{Y}_M$$
$$= \frac{N_M}{N} (\bar{Y}_R - \bar{Y}_M)$$

- What makes this bias big?
- What makes it small?

1 March 2011

15

## Types of Missingness

- Can we survey the non-respondents to find out why?
  - How? They didn't respond!?
  - Multi-phase sampling & call-backs
- Types of Missingness
  - Missing Completely at Random (MCAR)
    - Just got a smaller sample – only SE's affected
  - Missing at Random (MAR)
    - Different strata may have different missingness but within strata it is MCAR
  - Non-ignorable missingness (MNAR)
    - "Who is missing" is related to what they would have said!

1 March 2011

16

## Imputation (predicting / filling-in missing values)

- Some possible methods:
  - Fill in the mean or median of everyone else
  - Find another unit like this one in every way except for the missing value, and copy that value over
  - From the “complete units” build a regression model to predict the missing value
- These methods all depend on MAR
- How does imputation affect survey estimates?

## Summary

- Due Today - II.5b:
  - Revised questionnaire/protocol based on try-outs!
- Due Thurs Midnight – II.6:
  - Final, full project proposal (items A-M)
  - IRB form
  - Draft informed consent form/statement
- Also Due Thurs Midnight:
  - Peer evaluations (HW04).
- Spring Break!
- Non-response and Missingness